

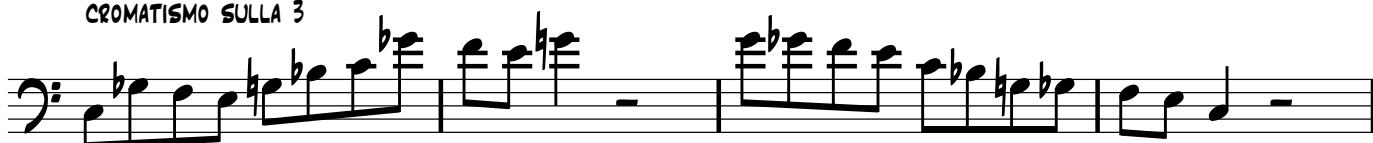
DOMINIAMO LE DOMINANTI 10

ARPEGGI CON DOPPIO CROMATICO SUPERIORE

CROMATISMO SULLA TONICA



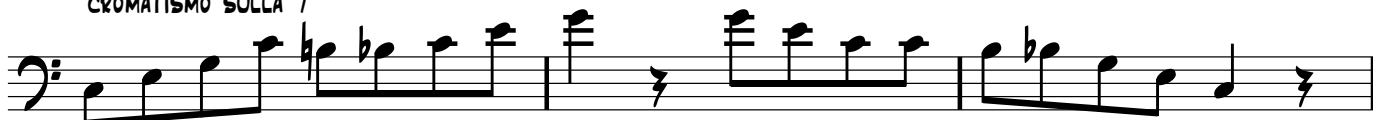
CROMATISMO SULLA 3



CROMATISMO SULLA 5



CROMATISMO SULLA 7



SCALE X SETTIME

MIXOLYDIAN

m m m M m m M

LYDIAN (b7)

m m m m M m M

MIXOLYDIAN (b2)(b6)

m M dim M m M m

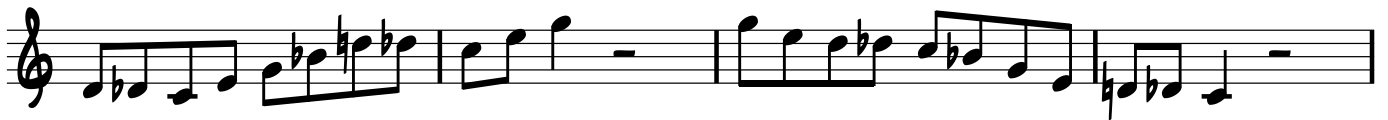
SIMMETRICA DIM 1/2 1

m M m M m M m M

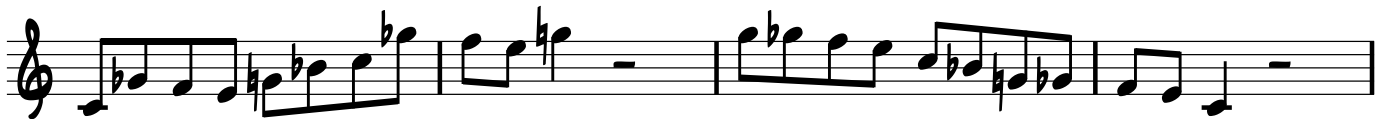
DOMINIAMO LE DOMINANTI 10

ARPEGGI CON DOPPIO CROMATICO SUPERIORE

CROMATISMO SULLA TONICA



CROMATISMO SULLA 3



CROMATISMO SULLA 5



CROMATISMO SULLA 7



SCALE X SETTIME

MIXOLYDIAN

m m m M m m M



LYDIAN (b7)

m m m m M m M



MIXOLYDIAN (b2)(b6)

m M dim M m M m



SIMMETRICA DIM 1/2 1

m M m M m M m M

