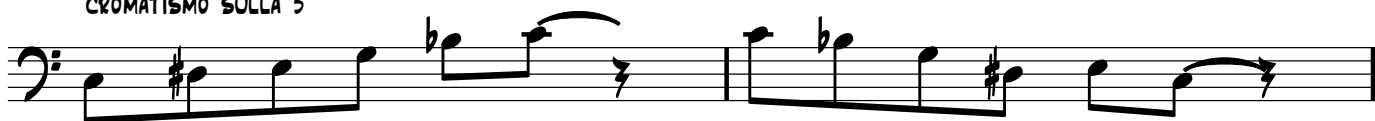


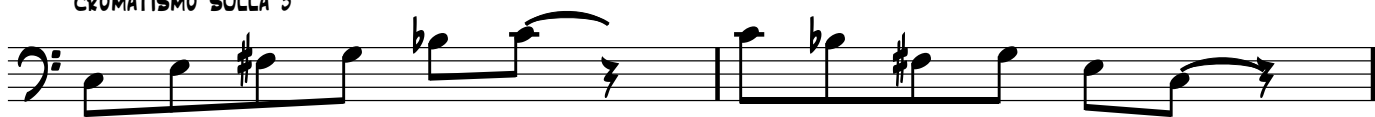
DOMINIAMO LE DOMINANTI 9

ARPEGGI

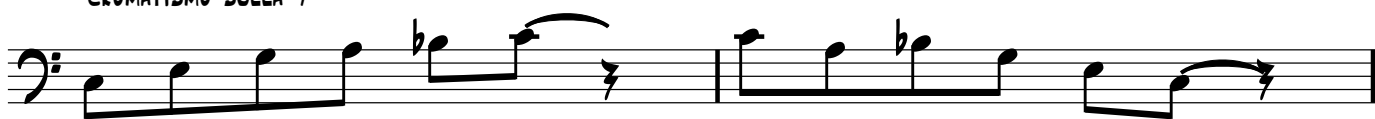
CROMATISMO SULLA 3



CROMATISMO SULLA 5



CROMATISMO SULLA 7



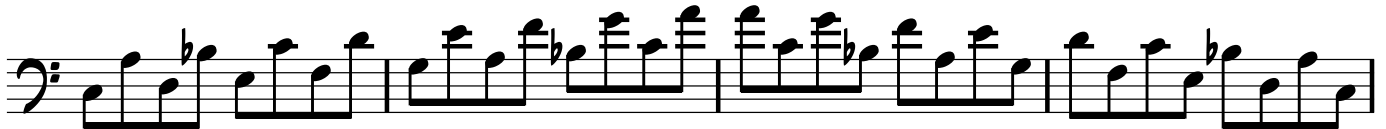
CROMATISMO SULLA TONICA



SCALE X SESTE

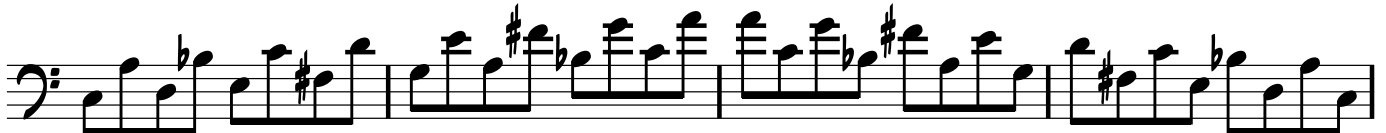
A) MIXOLYDIAN

M m m M M m M



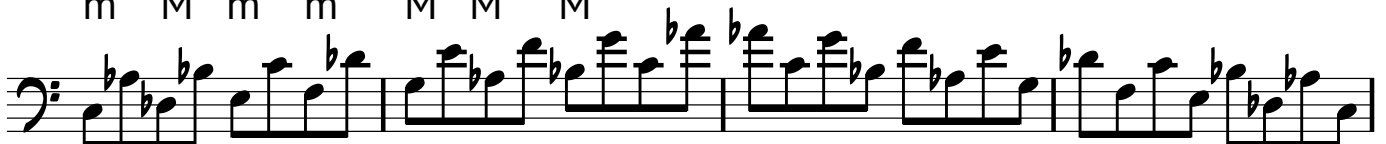
LYDIAN (b7)

M m m m M M M



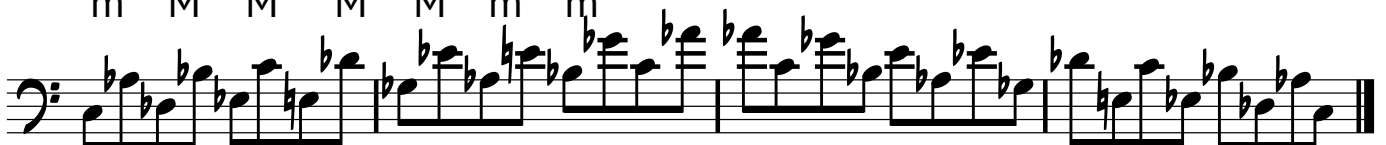
MIXOLYDIAN (b2)(b6)

m M m m M M M



ALTERATA

m M M M M m m



PROGRESSIONE

|| B \flat MAJ7 | G7 ALT | C+7 | F7 ALT ||

DOMINIAMO LE DOMINANTI 9

ARPEGGI

CROMATISMO SULLA 3



CROMATISMO SULLA 5



CROMATISMO SULLA 7



CROMATISMO SULLA TONICA



SCALE X SESTE

A) MIXOLYDIAN

M m m M M m M



LYDIAN (b7)

M m m m M M M



MIXOLYDIAN (b2)(b6)

m M m m M M M



ALTERATA

m M M M M m m



PROGRESSIONE

|| Bb MAJ7 | G7 ALT | C+7 | F7 ALT ||